

LEED CANADA  
MULTIVER

**NEW  
CONSTRUCTIONS  
AND MAJOR  
RENOVATIONS**

Quebec

Version 2.0



# LEED Canada

## MULTIVER

Multiver is proud to take part in the continued growth of the movement toward green building and sustainable development. Our wide range of products can help you obtain **LEED®** for your projects.

The following document provides information on credits in which Multiver qualifies with its products to help you get points for the following categories of the **LEED®** rating system. For more information about **LEED®** rating system, please visit the website of the Canada Green Building Council : [www.cagbc.ca](http://www.cagbc.ca)



## LEED category :

# ENERGY AND ATMOSPHERE (EA)

### EA CREDIT 1 : OPTIMIZE ENERGY PERFORMANCE

**INTENT :** To achieve increasing levels of energy performance beyond the prerequisite standard to reduce environmental and economic impacts associated with excessive energy use.

**REQUIREMENTS :** Demonstrate a percentage cost improvement in the proposed building performance rating compared with the reference building performance rating.

#### POSSIBLE POINTS :

- ▶ 1-19 points new construction or major renovations projects (NC)
- ▶ 3-21 points for core and shell projects (CS)

## WHAT MULTIVER CAN DO TO HELP YOU GET POINTS

Multiver provides an important range of glazing options that can help significantly reduce energy consumption of a building. Multiver glazings, in addition to help you achieve the LEED® requirements, are available in various colors to blend with your wanted design. Contact a Multiver representative who will help you determine which glazing is best for your project.



The Vistal 1 Condominium



## LEED category :

# ENERGY AND ATMOSPHERE (EA)

### EA CREDIT 2 : ON-SITE RENEWABLE ENERGY

**INTENT :** To encourage and recognize increasing levels of on-site renewable energy self-supply to reduce environmental and economic impacts associated with fossil fuel energy use.

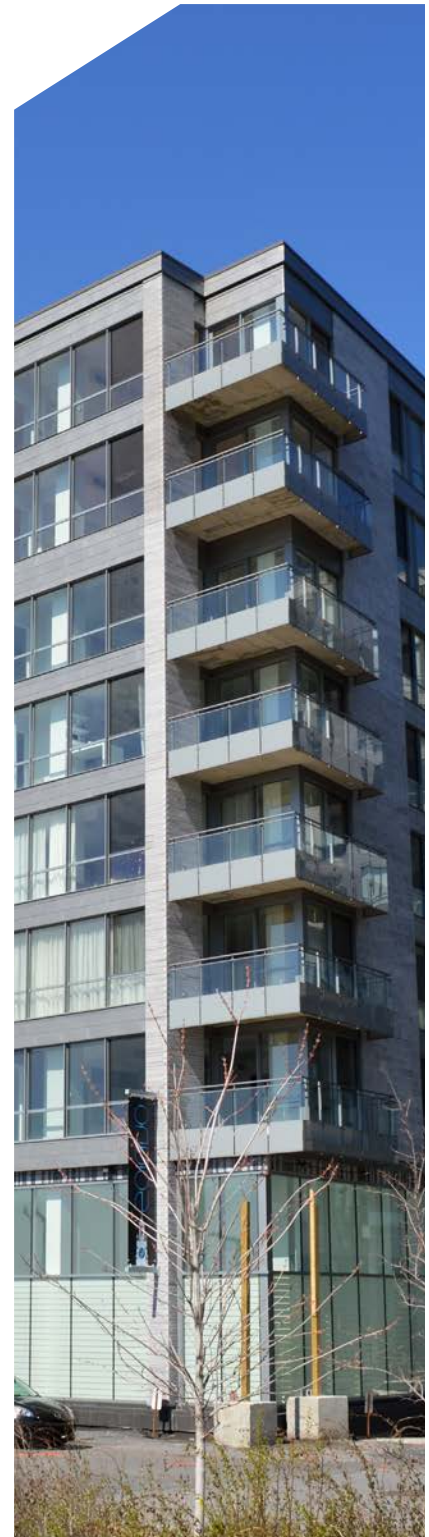
**REQUIREMENTS :** Use on-site renewable energy systems to offset building energy cost.

#### POSSIBLE POINTS :

- ▶ 1-7 points new construction or major renovations projects (NC)
- ▶ 2-4 points for core and shell projects (CS)

## WHAT MULTIVER CAN DO TO HELP YOU GET POINTS

Multiver offers the possibility to add a photovoltaic film (PV) on its windows to act as a spandrel. This innovative technology enables the use of the building envelope in order to recover the natural energy of sunlight to reduce costs and energy consumption of the building. For more information about this product, please contact one of our representatives.



The Solano Condominium



## LEED category :

# MATERIALS AND RESOURCES

### MR CREDIT 4 : RECYCLED CONTENT

**INTENT :** To increase demand for building products that incorporate recycled content materials, thereby reducing impacts resulting from extraction and processing of virgin materials.

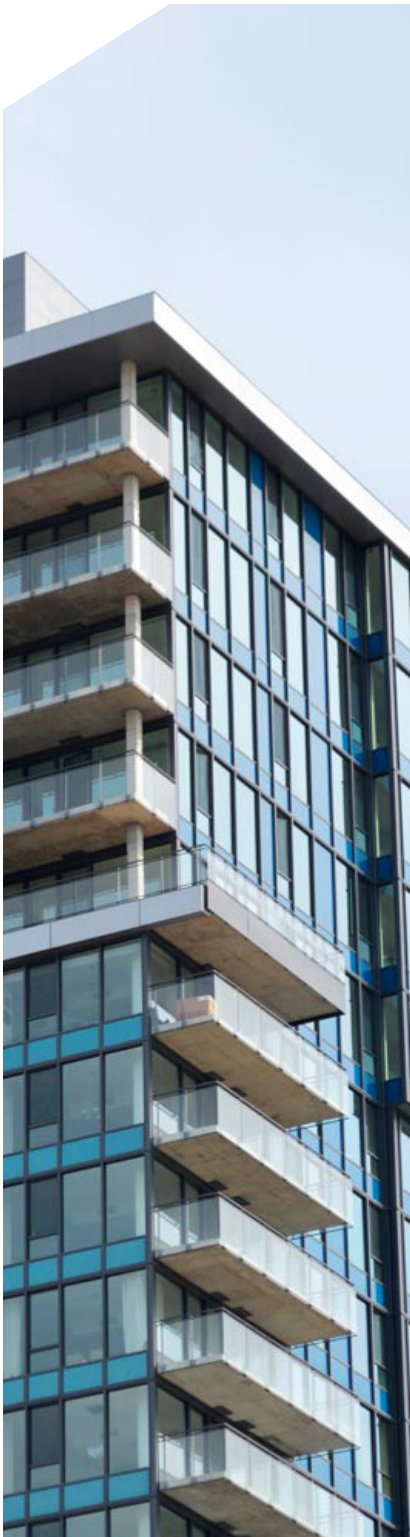
**REQUIREMENTS :** Use materials with recycled content such that the sum of post-consumer recycled content plus 1/2 of the pre-consumer content constitutes at least 10 % or 20 %, based on cost, of the total value of the materials in the project.

#### POSSIBLE POINTS :

- ▶ 1-2 points for new construction and major renovations projects (NC) and core and shell projects (CS)

## WHAT MULTIVER CAN DO TO HELP YOU GET POINTS

Multiver retrieves the broken glass and other waste generated within its manufactures, but as defined by the LEED® rating system document, this is not considered recycled content recognized for earning points. However, certain glazings and components used in sealed units offered by Multiver may contain significant amounts of recycled content. A representative will be able to give you more information on these products.



Symphonia Condominium



## LEED category :

# MATERIALS AND RESOURCES

### MR CREDIT 5 : REGIONAL MATERIALS

**INTENT :** To increase demand for building materials and products extracted, processed, and manufactured within the region, thereby supporting the use of indigenous resources and reducing the environmental impacts resulting from transportation.

**REQUIREMENTS :** Use building materials or products that have been extracted, harvested, recovered and processed within 800 km (500 miles) (2400 km if shipped by rail or water) of the final manufacturing site.

#### POSSIBLE POINTS :

- ▶ 1-2 points for new construction and major renovations projects (NC) and core and shell projects (CS)

## WHAT MULTIVER CAN DO TO HELP YOU GET POINTS

Multiver has factories in Quebec City and Montreal and can therefore serve projects over a wide area and, in accordance with the distances required for this credit. In addition, Multiver offers several products including the production sites and places of extraction of the component materials are within the range allowed. For more information on eligible products, please contact one of our representatives.



The Crystal hostel



## LEED category :

# INDOOR ENVIRONMENTAL QUALITY (IEQ)

**IEQ CREDIT 8.1 : DAYLIGHT AND VIEWS : DAYLIGHT**

**IEQ CREDIT 8.2 : DAYLIGHT AND VIEWS : VIEWS**

**INTENT :** To provide building occupants a connection to the outdoors through the introduction of daylight and views into the regularly occupied areas of the building.

**REQUIREMENTS :** Achieve daylighting in at least 75 % of the regularly occupied spaces. Achieve direct line of sight to the outdoor environment via vision glazing between 0.76 metres and 2.3 metres (30 inches and 90 inches) above the finished floor for building occupants in 90 % of all regularly occupied areas.

### **POSSIBLE POINTS :**

- ▶ 2 points for new construction and major renovations projects (NC) and core and shell projects (CS)

## WHAT MULTIVER CAN DO TO HELP YOU GET POINTS

Multiver has a wide selection of glazings with different levels of visible transmission that provide natural light in interior spaces. These products can meet the requirements of these credits without compromising energy performance. Our available glazings thus provide design flexibility for all types of projects. For more information and help choosing the right glazing that applies to your project, contact one of our representatives.



Hilton Garden Inn



## \*\*\*VOC CONTENT\*\*\*

One of the categories in the rating system is **INDOOR ENVIRONMENTAL QUALITY (IEQ)**. THE **IEQ CREDIT 4.1: LOW-EMITTING MATERIALS: ADHESIVES AND SEALANTS** asks for VOC content of the different adhesives and sealants used on the project. Multiver is often asked to provide information about the VOC content of their products to meet the requirements for this credit. As defined in the LEED® rating system document, the VOC content is necessary for " all adhesives and sealants used on the interior of the building (i.e, inboard side of the weatherproofing system and applied on-site) ". Because Multiver products are not installed inboard side of the weatherproofing system and Multiver do not apply any product on the project site, the IEQ Credit 4.1 does not apply to our products.



Montmorency Ford





This document gives a general description of the product. For further information, please contact an authorized supplier of Multiver products. The use of any of the products mentioned herein is the sole responsibility of the users. Multiver assumes no responsibility for the use of its products.